

NDIS Fact Sheet: Support Coordination



What is Support Coordination?

Support Coordination supports participants in understanding and using their NDIS funding. To be eligible, participants must have 'Support Coordination' in their NDIS Plan.

Support Coordination is an independent service run by the RIDBC internal NDIS team. Our Support Coordinators can link you to local supports that you require as well as assist you to access supports from other sources including health and social services, local community groups and other informal networks.

RIDBC can provide this service to participants in either Auslan or English.



How can RIDBC help me?



Build supports around you and your family to overcome the challenges associated with accessing NDIS supports



Increase your independence and capacity to make informed decisions



Find and engage service providers that best suit your needs



Connect with your local community and mainstream supports



Help you navigate your NDIS Plan – from initial activation to Plan Review

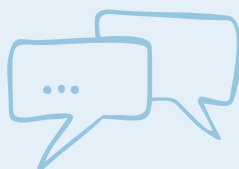
How do I choose RIDBC to be my Support Coordination provider?

Once your NDIS Plan is approved and you obtain a copy with an approved budget for 'Support Coordination' you can:



1

Contact your NDIS Planner or LAC and ask to have RIDBC as your provider. This NDIA will refer to our service directly.



2

We will contact you within 5 working days to arrange an initial meeting with you which can be completed in-person at the RIDBC Head Office in North Rocks.



3

During the meeting, your NDIS Support Coordinator will discuss your NDIS plan and get you started. You will be asked to sign a service agreement at this point.

For further information

Contact our Support Coordinators on **(02) 9872 0701** or **support.coordination@ridbc.org.au**